



A school where every child can 

Kirk Langley CE Primary School

Low Level Concerns Policy

Version History	
Date	Detail
Autumn 2022	Agreed by staff Approved by Governors
Review Autumn 2023	

Kirk Langley is a Church of England Primary School and our family believe that 'Every Child Can Shine.' Our visions and values, built on the living Gospel of Christ within daily life, are at the core of everything we do. They underpin our teaching and learning and provide an environment which prepares our pupils in being respectful, confident, thriving citizens.

Daniel 12:3

'Those who have insight will shine brightly like the brightness of the expanse of heaven, and those who lead the many to righteousness, like the stars forever and ever.'

We aim to provide a thriving, inspiring and stimulating learning environment where children achieve the very best they are capable of because all the staff value their different learning styles. Kirk Langley Church of England Primary School is committed to Christian values where children, parents/carers and our community know us by our actions.

Within a Christian ethos we aim to:

- Promote a positive attitude to life-long learning, nurturing the development of self-esteem; leading to aspirational, independent learners that are prepared to be challenged and take risks in a diverse and ever changing world.
- Provide the children with valuable experiences and opportunities, through a broad, balanced and exciting curriculum, where learning is purposeful and engaging.
- Use a variety of teaching strategies and resources effectively and creatively; encouraging each child to progress and attain to the highest possible standards, in relation to their age and ability.
- Strongly believe in the partnership of parental involvement in the education of our pupils.
- Demonstrate and foster respect for ourselves and others within the school, local community and the global community.
- Respect the belief of others and celebrate cultural diversity.
- Encourage spiritual and moral values.
- Explicitly promote the fundamental British values of democracy, the rule of law, individual liberty and mutual respect and tolerance of those with different faiths and beliefs through a 'living' curriculum.
- Value each child as an individual within the school and respect personal beliefs.

Low-Level Concerns Policy

Kirk Langley Church of England Primary School

1. Introduction

At Kirk Langley Church of England Primary School, we take safeguarding very seriously. This includes ensuring that adults who work with children do so in a way that is in accordance with the ethos and policies set out by the school, including the Staff Code of Conduct. This policy sets out the detail and processes for staff regarding low-level concerns they may have.

2. Summary

It may be possible that a member of staff acts in a way that does not cause risk to children, but is however inappropriate. A member of staff who has a concern about another member of staff should inform the Head Teacher . If the Head Teacher cannot be contacted, the Chair of Governors should be contacted instead.

3. Keeping Children Safe in Education September 2022

The following is taken from Keeping Children Safe in Education September 2022

407. As part of their whole school approach to safeguarding, schools and colleges should ensure that they promote an open and transparent culture in which all concerns about all adults working in or on behalf of the school or college (including supply teachers, volunteers and contractors) are dealt with promptly and appropriately.

408. Creating a culture in which all concerns about adults (including allegations that do not meet the harms threshold (see Part Four - Section one)) are shared responsibly and with the right person, recorded and dealt with appropriately, is critical. If implemented correctly, this should encourage an open and transparent culture; enable schools and colleges to identify concerning, problematic or inappropriate behaviour early; minimise the risk of abuse; and ensure that adults working in or on behalf of the school or college are clear about professional boundaries and act within these boundaries, and in accordance with the ethos and values of the institution.

What is a low level concern?

409. The term 'low-level' concern does not mean that it is insignificant, it means that the behaviour towards a child does not meet the threshold set out at paragraph 338. A low-level concern is any concern – no matter how small, and even if no more than causing a sense of unease or a 'nagging doubt' - that an adult working in or on behalf of the school or college may have acted in a way that:

- is inconsistent with the staff code of conduct, including inappropriate conduct outside of work; and*
- does not meet the allegations threshold or is otherwise not considered serious enough to consider a referral to the LADO.*

410. Examples of such behaviour could include, but are not limited to:

- being over friendly with children;*
- having favourites;*
- taking photographs of children on their mobile phone;*
- engaging with a child on a one-to-one basis in a secluded area or behind a closed door; or,*
- using inappropriate sexualised, intimidating or offensive language.*

411. Such behaviour can exist on a wide spectrum, from the inadvertent or thoughtless, or behaviour that may look to be inappropriate, but might not be in specific circumstances, through to that which is ultimately intended to enable abuse.

412. It is crucial that any such concerns, including those which do not meet the harm threshold (see Part Four - Section one), are shared responsibly and with the right person, and recorded and dealt with appropriately. Ensuring they are dealt with effectively should also protect those working in or on behalf of schools and colleges from potential false allegations or misunderstandings.

4. Clarity around Allegation vs Low-Level Concern vs Appropriate Conduct

Allegation

Behaviour which indicates that an adult who works with children has:

- behaved in a way that has harmed a child, or may have harmed a child;
- possibly committed a criminal offence against or related to a child;
- behaved towards a child or children in a way that indicates they may pose a risk of harm to children.

Low-Level Concern

Any concern – no matter how small, even if no more than a ‘nagging doubt’ – that an adult may have acted in a manner which:

- is not consistent with an organisation’s Code of Conduct, and/or
- relates to their conduct outside of work which, even if not linked to a particular act or omission, has caused a sense of unease about that adult’s suitability to work with children.

Appropriate Conduct

Behaviour which is entirely consistent with the organisation’s Code of Conduct, and the law.

5. Storing and use of Low-Level Concerns and follow-up information

LLC information will be stored securely within the schools safeguarding systems, with access only by the leadership team. This will be stored in accordance with the school’s GDPR and data protection policies.

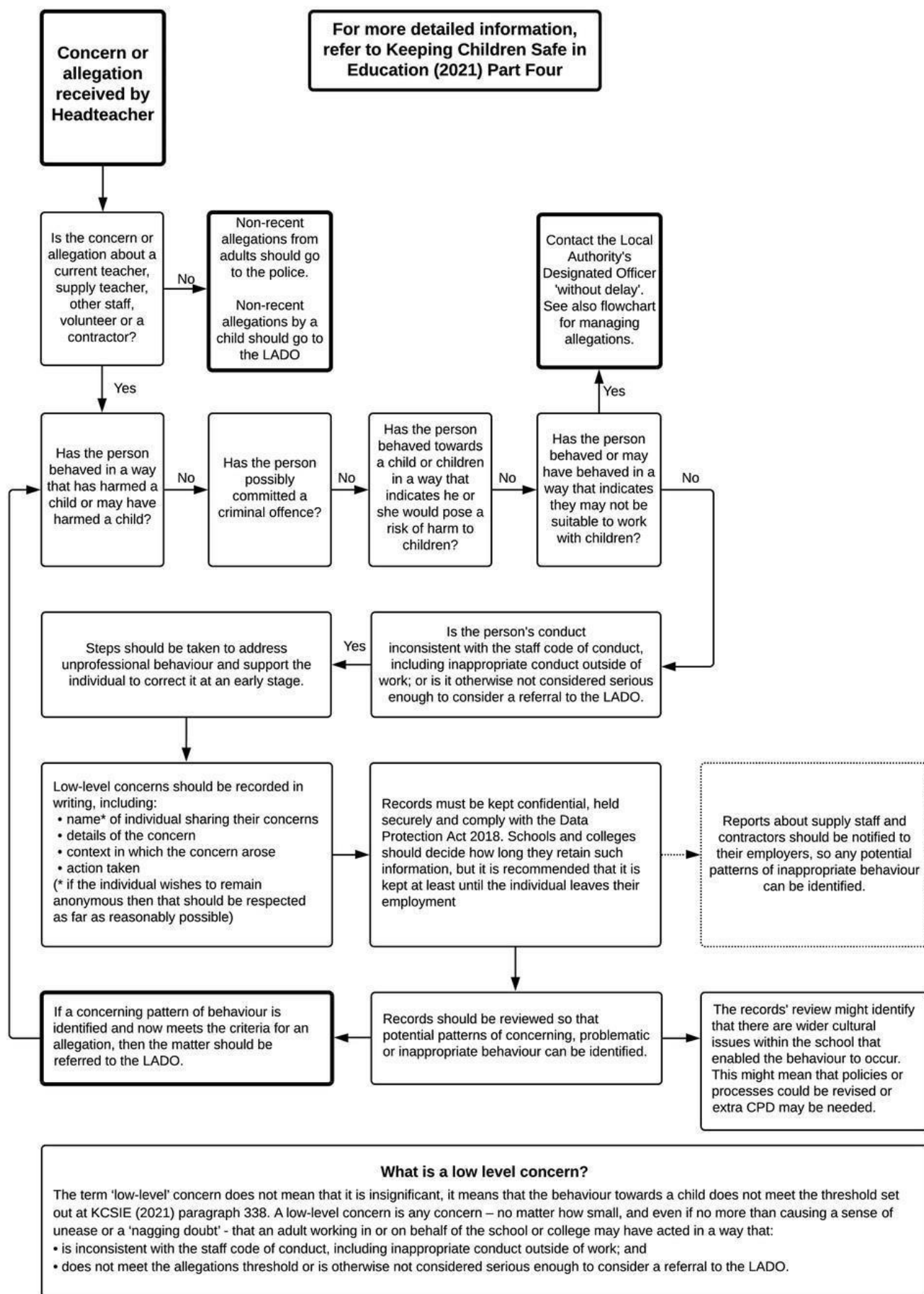
The staff member(s) reporting the concern must keep the information confidential and not share the concern with others apart from the Head Teacher or those aware in the senior leadership team.

Low-Level Concerns will not be referred to in references unless they have been formalised into more significant concerns resulting in disciplinary or misconduct procedures.

Whenever staff leave any record of low-level concerns which are stored about them will be reviewed as to whether or not that information needs to be kept. Consideration will be given to:

- (a) whether some or all of the information contained within any record may have any reasonably likely value in terms of any potential historic employment or abuse claim so as to justify keeping it, in line with normal safeguarding records practice; or
- (b) if, on balance, any record is not considered to have any reasonably likely value, still less actionable concern, and ought to be destroyed accordingly.

6. Process to follow when a Low-Level Concern is raised



7. Key Reference Document

Read this document for further information about Low-Level Concerns, which is referenced in KCSIE 2022.